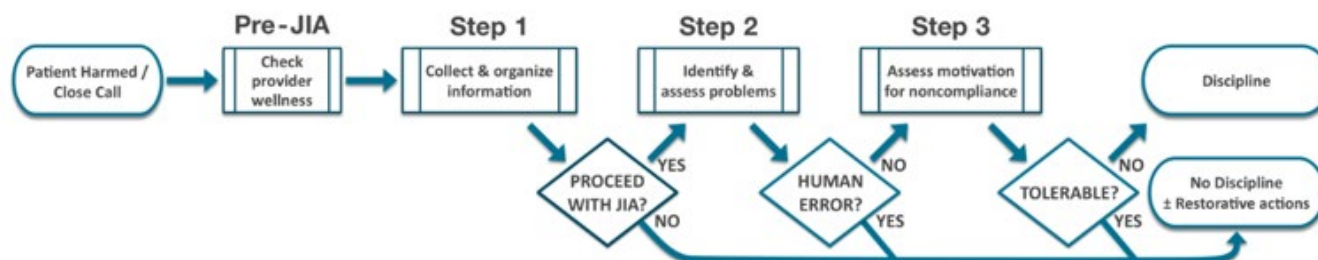


What is a Just Assessment



STEP	DECISION	TOOLS
Pre-JIA: Check provider wellness		Provider Wellness Check
1: Collect and organize information		Bias Awareness Guide Chronology of Events Table Interview Guide Peer Review Guide System Factors Guide System Factors Table Systematic Systems Analysis (SSA) guidebook
	1: Proceed with JIA?	Peer Review Guide Systematic Systems Analysis (SSA) guidebook
2: Identify and assess problems		Chronology of Events Table Problems Identification Table
	2: Human error?	Problems Identification Table Restorative Actions
3: Assess motivation for noncompliance		Motivation for Noncompliance Questions System Factors Table
	3: Tolerable?	Bias Awareness Guide Disciplinary Actions Motivation for Noncompliance Questions Noncompliance Assessment Matrix Peer Review Guide Restorative Actions System Factors Table

More information and additional resources are available on our website relating to a Just culture
<https://justculture.hqca.ca/>